



# Rene Swiss Corporation

## Rene Swiss Corporation



## Product Catalog

Multi-Spindle Collets

Phone: 203.879.4822  
[www.reneswiss.com](http://www.reneswiss.com)

Fax: 203.879.0732  
[rachel@reneswiss.com](mailto:rachel@reneswiss.com)

Rev. 1



# Rene Swiss Corporation

## Gildemeister

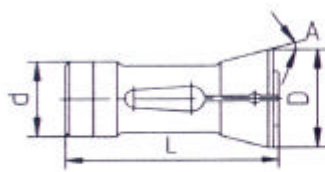


Fig. 1

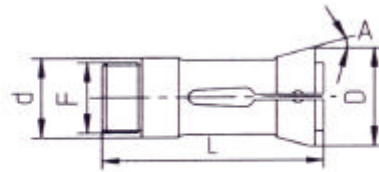


Fig. 2

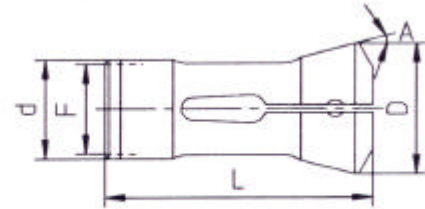


Fig. 3

### Clamping

### Maximum Capacity

Reference	Type	Fig.	d	D	L	A	F	●	⬢	■
GM16 S	GM 16	1	29.9	39	80.5	15°		20	16	
9012 E	AS 16/20 GM 20	2	34	42	90	15°	M30x100G	25	20	
9017 E	GS 20	2	38	45.5	90	15°	M34x75G	30	25	
9045 E	AS 25	3	45	60.4	167	15°	M40x100G	34	28	
9046 E	GS 25	3	45	60.4	167	15°	M40x150G	34	28	
9069 E	AS 32	3	53	69.4	137	15°	M48x150G	41	34	
9069 E	GM 32	3	53	69.4	137	15°	M48x150G	41	34	
9069 E	GM 35	3	53	69.4	137	15°	M48x150G	41	34	
9115 E	GM 42	3	64	80.5	134	15°	M59x150G	52	45	
9081 E	GS 35/36 GS 42	3	56	72.4	137	15°	M52x150G	42	35	
9132 E	AV/AS 48 AA 48	3	70	90.4	160	15°	M65x150G	57	48	
9178 E	AV/AS 67 AA 67	3	90	115.4	178	15°	M85x150G	78	66	
9209 E	AV/AS 82	3	109	138.4	189	15°	M102x150G	90	77	
9239 E	AS 100	3	128	160.4	250	15°	M122x150G	110	94	

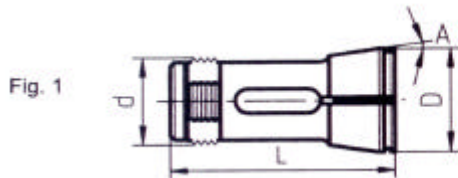


Fig. 1

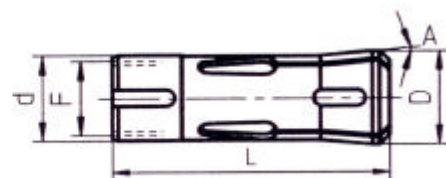


Fig. 2

### Pick-up

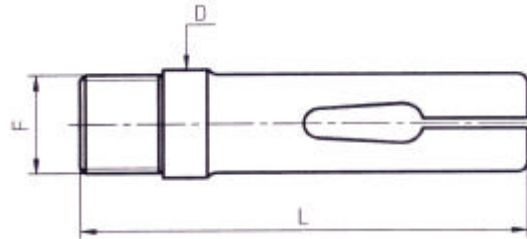
### Maximum Capacity

Reference	Type	Fig.	d	D	L	A	F	●	⬢	■
GM16 PU	GM 16	1	21	25	51.5	8°		16		
9012 PU	AS 16/20 GM 20	2	26	28.5	80	5°	M21.5x75	25		
9012 PUH	GS 20 HYDRAU	2	28	32	64	8°	M24x150G	25		
9045 PU	AS 25	2	30	35.1	63	15°	M20x150	25		
9069 PUV	AS 32	2	39	44	82	8°	M34x100G	32		



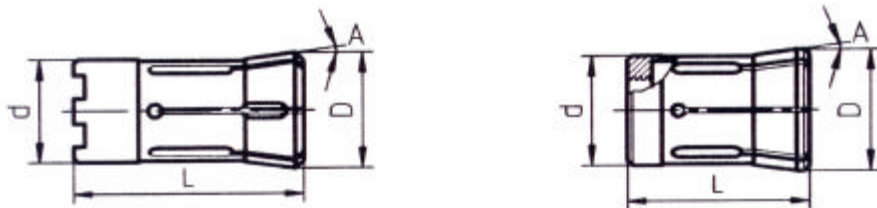
# Rene Swiss Corporation

## Gildemeister



### Feed Finger

Reference	Type	Fig.	d	D	L	A	F	Maximum Capacity		
								●	⬠	■
GM 16 A	GM 16			22	86		M20x100	16		
9258 E	AS 16/20 GM 20			25	90		M24x100	20		
9258 E2	GS 20			30.5	90		M28x75	25		
9287 E	AS25			33	140		M30x100G	26		
9289 E	GS 25			34.2	140		M30x100	26		
9316 E	AS 32			40	136		M38x150G	32		
9316 E2	GM 32			41.2	136		M38x150	32		
9613 E3	GM 35			41.2	132		M39x100	35		
9374 E	GM 42			51.4	136		M48x150	42		
9333 E	GS 35/36 GS 42			45	136		M42x150G	36		
9368 E	AV/AS 48 AA 48			57	160		M54x150G	48		
9447 E	AV/AS 67 AA 67			77.5	170		M74x150G	67		
9475 E	AV/AS 82			94	180		M88x150G	80		
9483 E	AS100			114	235		M108x150G	100		

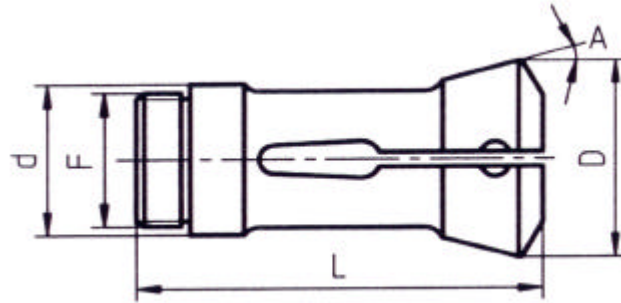


### Pick-up

Reference	Type	Fig.	d	D	L	A	F	Maximum Capacity		
								●	⬠	■
9069 PU	GM 35	3	39	44	82	8°		35		
9115 PU	GM 42	4	47	52.5	73	8°		42		
9081 PU	GS 35/36 GS 42	2	38	43	80	15°	M24x150	36		
9132 PU	AV/AS 48 AA 48	2	42	55	91	15°	M28x150	48		
9178 PU	AV/AS 67 AA 67	2	45	90.1	100	15°	M28x150	67		

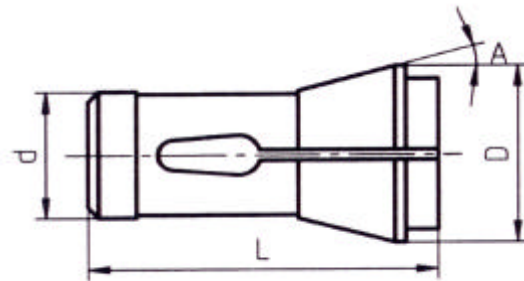


## Index



### Clamping

Reference	Type	Fig.	d	D	L	A	F	Maximum Capacity		
								●	⬡	■
9007 E	MS 16		32	41.5	84	15°	M28x100G	21	17	
9033 E	KS 20/22		40	55.2	102	15°	M35x150G	26	21	
9039 E	MS 25 KS 25		46	60.4	120	15°	M40x150G	33	27	
9070 E	KS 32		53	69.7	136	15°	M47x150G	40	33	
9108 E	KS 42		62	82.7	180	15°	M58x150G	50	42	
9133 E	KS50		70	91.6	157	15°	M65x200G	60	51	



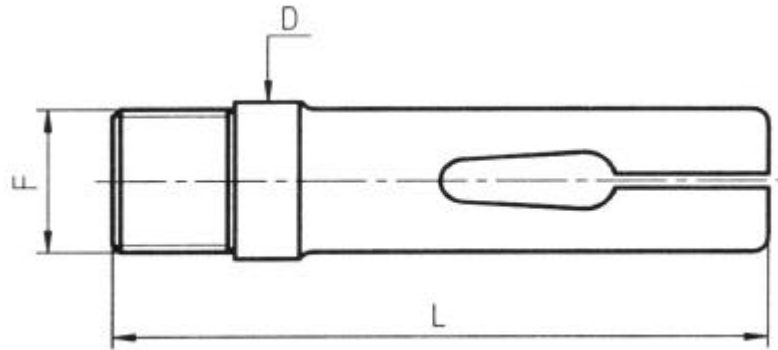
### Pick-up

Reference	Type	Fig.	d	D	L	A	F	Maximum Capacity		
								●	⬡	■
9039PU GM	MS 25		25	35.4	65	15°		25		
9039PU PM	MS25		25	31	54	15°		20		



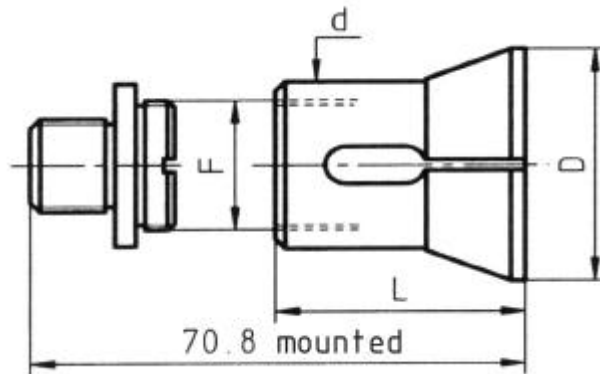
# Rene Swiss Corporation

## Index



### Feed Finger

Reference	Type	Fig.	d	D	L	A	F	Maximum Capacity		
								●	⬡	■
9255 E	MS 16			25	88		M23x100	18		
9273 E	KS 20/22			30.8	102		M28x150	22		
9282 E	MS 25 KS 25			37	118		M33x150	26		
9319 E	KS 32			43	130		M38x150	32		
9364 E	KS 42			54	170		M50x150G	42		
9402 E	KS 50			60	156		M57x200G	50		



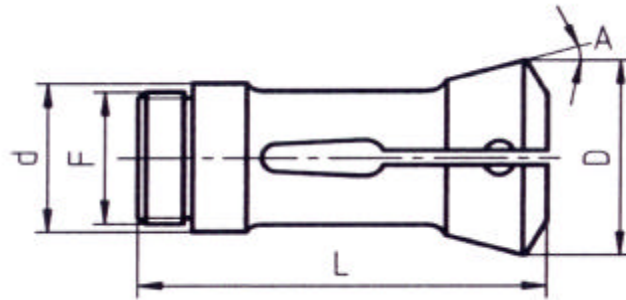
### Pick-up

Reference	Type	Fig.	d	D	L	A	F	Maximum Capacity		
								●	⬡	■
9108 PU	KS 32		36.5	49	49.8	15°	M28x150G	40		
9109 PU	KS 42		36.5	49	49.8	15°	M28x150G	40		
9110 PU	KS 50		36.5	49	49.8	15°	M28x150G	40		



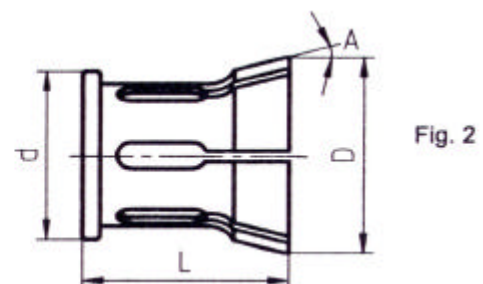
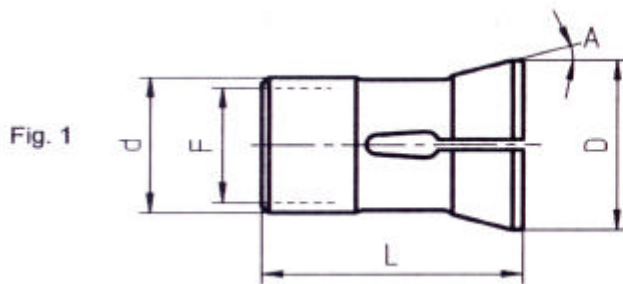
# Rene Swiss Corporation

## Schütte



### Clamping

Reference	Type	Fig.	d	D	L	A	F	Maximum Capacity		
								●	⬢	■
9015 E	SF 13		25	36.2	72	15°	M22x100G	18	14	
9007 E	SE16/SE18		32	41.8	84	15°	M28x100G	23	19	
9007 E2	AG 20		32	41.8	84	15°	M28x100G	25	21	
9016 E	SF 20		32	41.8	84	15°	M30x100G	25	21	
9039 E	SE25/SF26		46	60.4	120	15°	M40x150G	32	27	
9070 E	SD32/SF32		53	69.7	136	15°	M47x150G	40	34	
9112 E	SF40/SF42		62.9	78.8	157	15°	M56x150G	48	41	
9139 E	SD50/SF51		75	98.2	187	15°	M68x150G	58	49	
9179 E	VD63/SF63		90	115.8	211	15°	M82x150G	72	61	
9187 E	SF67/AF67		89.9	115.4	180	15°	M85x150G	74	63	
9210 E	SD80/SF81		109	138.8	241	15°	M100x150	85	73	

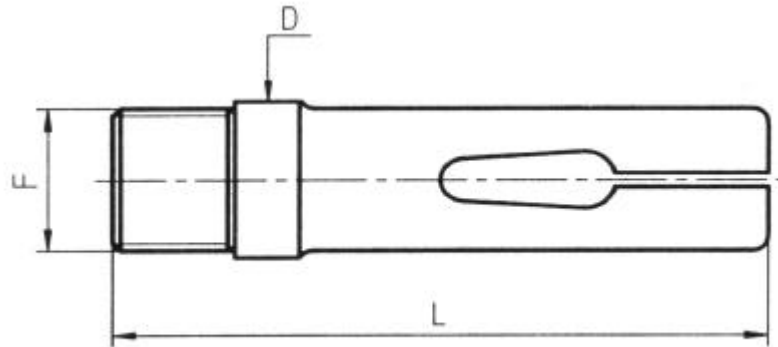


### Pick-up

Reference	Type	Fig.	d	D	L	A	F	Maximum Capacity		
								●	⬢	■
9015PU	SF 13	1	20	24	45	15°	M16x150G	14		
9007PU	SE16/SE18	1	25	35.1	58	15°	M18x150G	18		
9016PU	SF 20	1	28	36	50	15°	M24x150G	22		
PUSE25	SE 25	1	32	45.1	71	15°	M22x150G	27		
PUSE26	SF 26	2	34	42	53	15°		27		

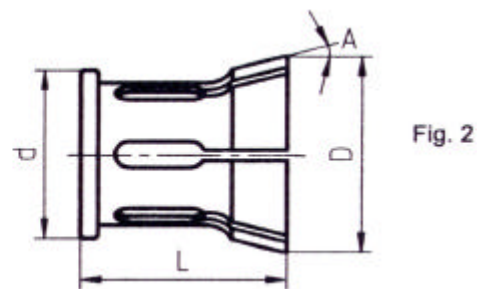
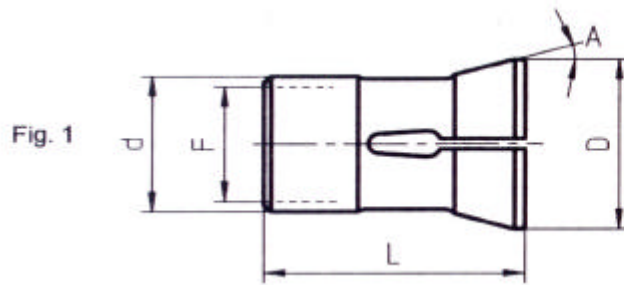


## Schütte



### Feed Finger

Reference	Type	Fig.	d	D	L	A	F	Maximum Capacity		
								●	⬢	■
9261 E	SF 13			19.6	75.5		M18x100	14		
9255 E	SE16/SE18			25	88		M23x100	18		
9262 E	SF20/AG20			27	88		M25x100	20		
9282 E	SE25/SF26			35	118		M33x150	26		
9319 E	SD32/SF32			42	130		M38x150	33		
9372 E	SF40/SF42			51	152		M48x150	42		
9406 E	SD50/SF51			62	178.5		M58x150	51		
9450 E	VD63/SD63			77	198.5		M72x150G	63		
9456 E	SF67/AF67			78	196		M75x150G	67		
9474 E	SD80/SF81			93	226.5		M88x150G	80		



### Pick-up

Reference	Type	Fig.	d	D	L	A	F	Maximum Capacity		
								●	⬢	■
9070PU	VD32/SD32	1	39	50.6	81	15°	M26x150G	33		
9112PU	SF32/SF42	2	52	60.6	60	15°		42		
PUAD40	AD 40	1	39	60.6	81	15°	M26x150G	42		
L650PU	VD50/SD50	1	46	67.2	83	15°	M32x150G	51		
9139PU	SF51/AF51	2	63	76.6	60	15°		51		
9187PU	SF67/SF81	2	76	88	75	15°		80		



# Rene Swiss Corporation

## Tornos

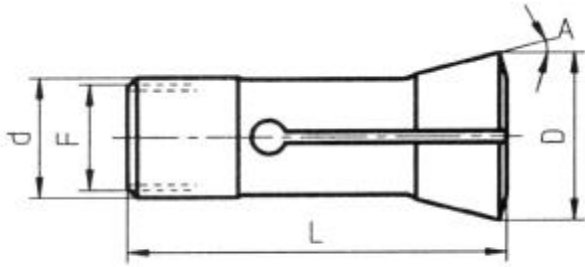


Fig. 1

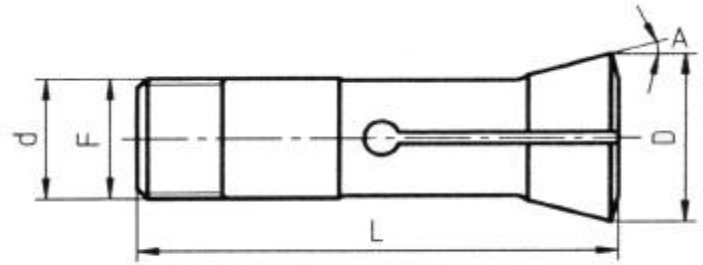


Fig. 2

### Clamping

Reference	Type	Fig.	d	D	L	A	F	Maximum Capacity		
								●	◆	■
9001 E	AS 14	1	25	35	75	16°	M22x100	18	15	
9021 E	SAS 16	2	25	35	94	16°	M25x100	20	17	
9018 E	BS 22	2	35	45	107	15°30'	M33x100	25	21	
9020 E	BS 20	1	36	45	107	15°30'	M33x125	25	21	
9012 ET	MULTIDECO 20/6-20/8	2	34	42	90	16°	M30x100G	25	21	
9039 ET	MULTIDECO 20/6	2	46	60.3	120	15°	M40x150G	34	29	
9081 E	SAS 36	2	56	72.4	139	15°	M52x150G	36	30	

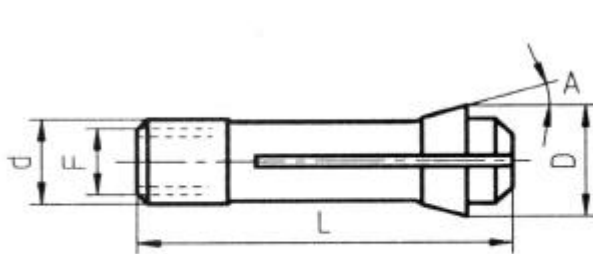


Fig. 1

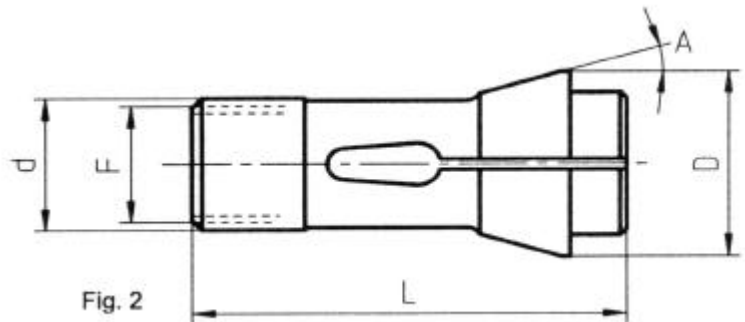


Fig. 2

### Pick-up

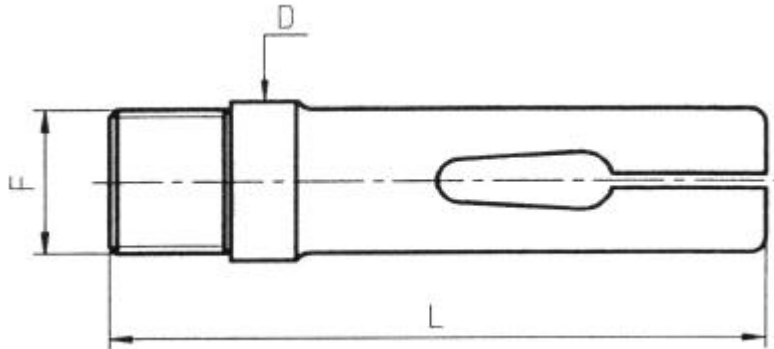
Reference	Type	Fig.	d	D	L	A	F	Maximum Capacity		
								●	◆	■
9001 PU	AS 14	1	16	21	66	16°	M14x75	16		
9001 PU	SAS 16	1	16	21	66	16°	M14x75	16		
9019 PU	BS 22	2	25	35	77	16°	M22x100	20		
9019 PU	BS 20	2	25	35	77	16°	M22x100	20		

Provided with extractor



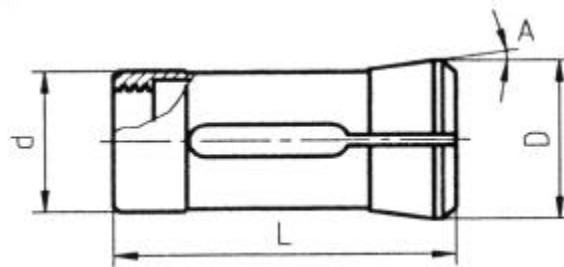


## Tornos



### Feed Finger

Reference	Type	Fig.	d	D	L	A	F	Maximum Capacity		
								●	⬠	■
9251 E	AS 14			17.9	70		M16x75	14	12	
9251 ER	AS 14			18.3	70		M17x75	15	13	
9265 E	SAS 16			22.8	98		M20x75	16	13	
9263 E	BS 22			29.7	116		M27x100	22	19	
9266 E	BS 20			27.7	116		M25x100	20	17	
9266 ER	BS 20			27.7	116		M26x100	23	19	
9258 ET	MULTIDECO 20/6-20/8			25	90		M24x100	20	17	
9282 ET	MULTIDECO 20/6			36	118		M33x150	26	22	
9333 E	SAS 36			44	136		M42x150G	36	30	



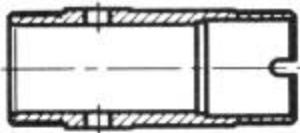
### Pick-up

Reference	Type	Fig.	d	D	L	A	F	Maximum Capacity		
								●	⬠	■
9012TPU	MULTIDECO 20/6-20/8	3	28	32	73	8°		24		
9039TPU	MULTIDECO 26/6	3	35.5	40	80	8°		32		
171 E	SAS 36	2	42	55	94	15°		36		

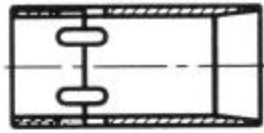


# Rene Swiss Corporation

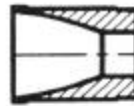
## Avanstar



Body No. 1



Adjusting Sleeve No. 2



Guide No. 4



Feed Pads No. 3

Spring No. 5



Spring No. 6



### An Advanced Quality Feed Finger

Standard feed fingers often leave marks on the O.D. of the bars since the pressure applied cannot be controlled. The Avanstar provides a solution with the ability to control (or measure) the amount of pressure on the feed finger, and it is able to be readjusted after each use.

The feed pads are constructed of polymere (**Leaving no marks**). The composition of this plastic is smooth and flexible with good traction for the bar that may be readjusted at any time to maintain the correct traction. Therefore, they have a relatively long life expectancy.

Production for these Avanstar parts are made on request, and usually completed within 2 - 3 weeks. Upon ordering, a 12 inch bar is recommended to adjust to the correct pressure before the first use.

The Avanstar parts may be used on the following multispindle machines:

TORNOS; SCHÜTTE; INDEX; GILDEMEISTER

**Instructions are included with each order**



### Gildemeister

Reference	Machine	Location	Maximum Capacity		
			●	●	■
GM16STNG...	GM 16	Complete Assembly	13	11	9
GM16STNGC...		Body No. 1			
GM16STNGB...		Adjusting Sleeve No. 2			
GM16STNGD...		Feed Pad No. 3			
GM16STNGO...		Guide No. 4			
GM16STNGR5...		Leaf Spring No. 5			
GM16STNGR6...		Leaf Spring No. 6			
9258STNG...	AS 16/20	Complete Assembly	16	13	11
9258STNGC...		Body No. 1			
9258STNGB...		Adjusting Sleeve No. 2			
9258STNGD...		Feed Pad No. 3			
9258STNGO...		Guide No. 4			
9258STNGR5...		Leaf Spring No. 5			
9258STNGR6...		Leaf Spring No. 6			
9263STNG...	GS20-P25	Complete Assembly	20	17	14
9263STNGC...		Body No. 1			
9263STNGB...		Adjusting Sleeve No. 2			
9263STNGD...		Feed Pad No. 3			
9263STNGO...		Guide No. 4			
9263STNGR5...		Leaf Spring No. 5			
9263STNGR6...		Leaf Spring No. 6			
9316STNG...	AS 32	Complete Assembly	31	26	21
9316STNGC...		Body No. 1			
9316STNGB...		Adjusting Sleeve No. 2			
9316STNGD...		Feed Pad No. 3			
9316STNGO...		Guide No. 4			
9316STNGR5...		Leaf Spring No. 5			
9316STNGR6...		Leaf Spring No. 6			
9333STNG...	GM 35	Complete Assembly	31	26	21
9333STNGC...		Body No. 1			
9333STNGB...		Adjusting Sleeve No. 2			
9333STNGD...		Feed Pad No. 3			
9333STNGO...		Guide No. 4			
9333STNGR5...		Leaf Spring No. 5			
9333STNGR6...		Leaf Spring No. 6			



## Avanstar

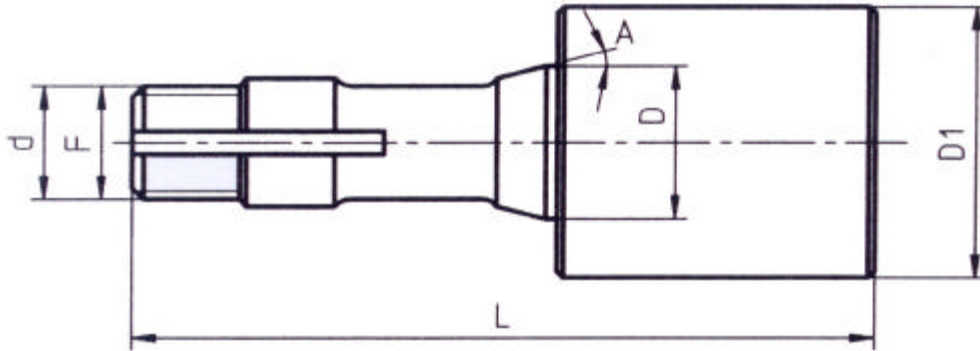
### Index - Schütte

Reference	Machine	Location	●	⬠	■
9282STNG...	MS25-SF26	Complete Assembly	24	20	16
9282STNGC...		Body No. 1			
9282STNGB...		Adjusting Sleeve No. 2			
9282STNGD...		Feed Pad No. 3			
9282STNGO...		Guide No. 4			
9282STNGR5...		Leaf Spring No. 5			
9282STNGR6...		Leaf Spring No. 6			
<b>Tornos</b>					
9251STNG...	AS 14	Complete Assembly	10	8	7
9251STNGC...		Body No. 1			
9251STNGB...		Adjusting Sleeve No. 2			
9251STNGD...		Feed Pad No. 3			
9251STNGO...		Guide No. 4			
9251STNGR5...		Leaf Spring No. 5			
9251STNGR6...		Leaf Spring No. 6			
9265STNG...	SAS 16	Complete Assembly	13	11	9
9265STNGC...		Body No. 1			
9265STNGB...		Adjusting Sleeve No. 2			
9265STNGD...		Feed Pad No. 3			
9265STNGO...		Guide No. 4			
9265STNGR5...		Leaf Spring No. 5			
9265STNGR6...		Leaf Spring No. 6			
9266STNG...	BS 20	Complete Assembly	16	13	11
9266STNGC...		Body No. 1			
9266STNGB...		Adjusting Sleeve No. 2			
9266STNGD...		Feed Pad No. 3			
9266STNGO...		Guide No. 4			
9266STNGR5...		Leaf Spring No. 5			
9266STNGR6...		Leaf Spring No. 6			
9258STNG...	MD20/6 & 20/8	Complete Assembly	16	13	11
9258STNGC...		Body No. 1			
9258STNGB...		Adjusting Sleeve No. 2			
9258STNGD...		Feed Pad No. 3			
9258STNGO...		Guide No. 4			
9258STNGR5...		Leaf Spring No. 5			
9258STNGR6...		Leaf Spring No. 6			
9282TSTNG...	MD26/6	Complete Assembly	24	20	16
9282TSTNGC...		Body No. 1			
9282TSTNGB...		Adjusting Sleeve No. 2			
9282TSTNGD...		Feed Pad No. 3			
9282TSTNGO...		Guide No. 4			
9282TSTNGR5...		Leaf Spring No. 5			
9282TSTNGR6...		Leaf Spring No. 6			



# Rene Swiss Corporation

## Blank Collet With Extended Head: Type W

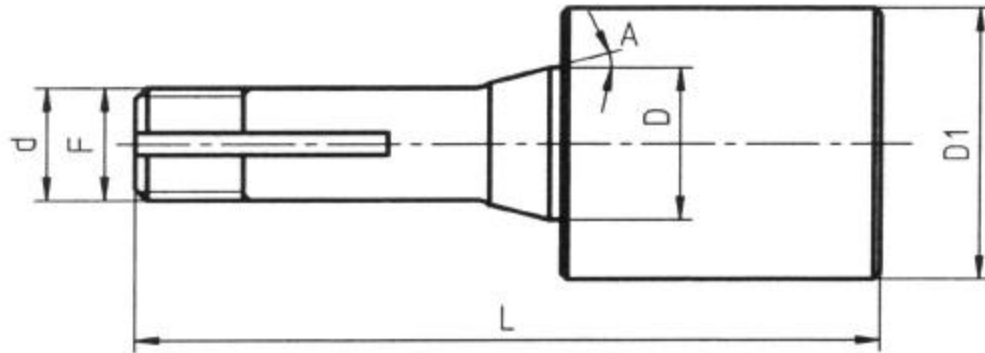


Reference	Type	d	D	L	A	F	D1	B
314 E1	W10	10	14	43.6	15°	S10 x 0.833	14	40
314 E2	W10	10	14	43.6	15°	S10 x 0.833	20	40
314 E3	W10	10	14	43.6	15°	S10 x 0.833	25	40
314 E4	W10	10	14	43.6	15°	S10 x 0.833	30	40
318 E1	W12	12	16	46	15°	S12 x 1.25	16.2	40
318 E2	W12	12	16	46	15°	S12 x 1.25	16.2	100
318 E3	W12	12	16	46	15°	S12 x 1.25	20	40
318 E4	W12	12	16	46	15°	S12 x 1.25	20	100
318 E5	W12	12	16	46	15°	S12 x 1.25	25	40
318 E6	W12	12	16	46	15°	S12 x 1.25	25	100
318 E7	W12	12	16	46	15°	S12 x 1.25	30	40
318 E8	W12	12	16	46	15°	S12 x 1.25	30	100
318 E9	W12	12	16	46	15°	S12 x 1.25	40	40
3213 E1	W15	15	15	58.3	15°	S15 x 1.25	20.2	50
3213 E2	W15	15	15	58.3	15°	S15 x 1.25	30	50
3213 E3	W15	15	15	58.3	15°	S15 x 1.25	40	50
349 E1	W20	20	20	73	15°	S19.7 x 1.666	26.5	20
349 E2	W20	20	20	73	15°	S19.7 x 1.666	26.5	50
349 E3	W20	20	20	73	15°	S19.7 x 1.666	26.5	100
349 E4	W20	20	20	73	15°	S19.7 x 1.666	30	50
349 E5	W20	20	20	73	15°	S19.7 x 1.666	30	100
349 E6	W20	20	20	73	15°	S19.7 x 1.666	35	50
349 E7	W20	20	20	73	15°	S19.7 x 1.666	40	50
349 E8	W20	20	20	73	15°	S19.7 x 1.666	40	100
349 E9	W20	20	20	73	15°	S19.7 x 1.666	50	50
349 E10	W20	20	20	73	15°	S19.7 x 1.666	50	100
349 E11	W20	20	20	73	15°	S19.7 x 1.666	60	50
349 E12	W20	20	20	73	15°	S19.7 x 1.666	80	50
349 E13	W20	20	20	73	15°	S19.7 x 1.666	100	50
349 E14	W20	20	20	73	15°	S19.7 x 1.666	100	100



# Rene Swiss Corporation

## Blank Collet With Extended Head: Type W

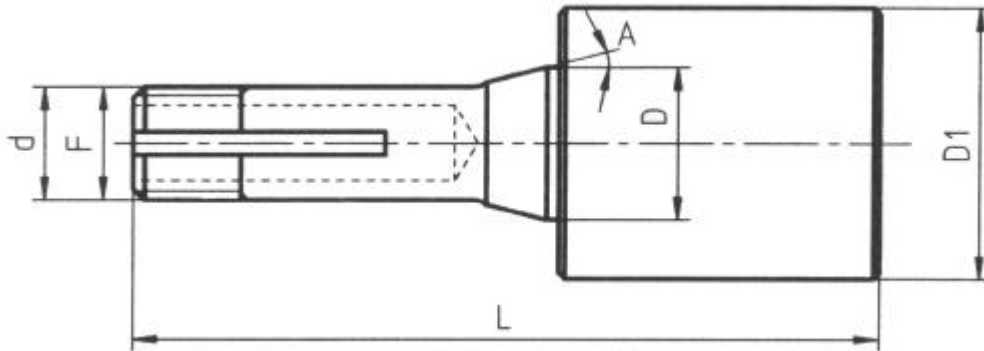


Reference	Type	d	D	L	A	F	D1	B
364 E1	W25	25	33.7	97.6	15°	S24.7 x 15f"	33.9	50
364 E2	W25	25	33.7	97.6	15°	S24.7 x 15f"	40	50
364 E3	W25	25	33.7	97.6	15°	S24.7 x 15f"	40	100
364 E4	W25	25	33.7	97.6	15°	S24.7 x 15f"	50	50
364 E5	W25	25	33.7	97.6	15°	S24.7 x 15f"	60	50
364 E6	W25	25	33.7	97.6	15°	S24.7 x 15f"	60	100
364 E7	W25	25	33.7	97.6	15°	S24.7 x 15f"	70	100
364 E8	W25	25	33.7	97.6	15°	S24.7 x 15f"	80	100
364 E9	W25	25	33.7	97.6	15°	S24.7 x 15f"	100	100
385 E1	W31.75	31.75	37.5	89	10°	31.63 x 20f"	50	50
385 E2	W31.75	31.75	37.5	89	10°	31.63 x 20f"	80	50



# Rene Swiss Corporation

## Blank Collet With Extended Head and Back drilled: Type W



Reference	Type	d	D	L	A	F	D1	B
349 P1	W20	20	26.3	73	15°	S19.7 x 1.666	26.3	16
349 P2	W20	20	26.3	73	15°	S19.7 x 1.666	26.3	26
349 P3	W20	20	26.3	73	15°	S19.7 x 1.666	26.3	50
349 P4	W20	20	26.3	73	15°	S19.7 x 1.666	30	50
349 P5	W20	20	26.3	73	15°	S19.7 x 1.666	40	30
349 P6	W20	20	26.3	73	15°	S19.7 x 1.666	50	30
364 P1	W25	25	33.7	97.6	15°	S24.7 x 15f "	33.7	20
364 P2	W25	25	33.7	97.6	15°	S24.7 x 15f "	33.7	50
364 P3	W25	25	33.7	97.6	15°	S24.7 x 15f "	50	50
364 P4	W25	25	33.7	97.6	15°	S24.7 x 15f "	60	50
385 P1	W31.75	31.75	37.5	89	10°	31.63 x 20f "	50	50
385 P2	W31.75	31.75	37.5	89	10°	31.63 x 20f "	80	50

## Emergency Collet



Reference	Type	d	D	D1	L	A	F	Maximum Capacity
318EDEPAN	W12	12	16		46	15°	M11.75 x 1.25	8
349EDEPAN	W20	20	26.3		73	15°	19.7 x 1.666	14
364EDEPAN	W25	25	33.7		97.6	15°	24.7 x 15f "	18



Rene Swiss Corporation  
14 Townline Road  
Wolcott, CT 06716

Tel. 203.879.4822  
Fax. 203.879.0732

[www.reneswiss.com](http://www.reneswiss.com)  
[rachel@reneswiss.com](mailto:rachel@reneswiss.com)